

# NEWMODEL

## DOMINIQUE

Height:	178 cm
Bust:	86 cm
Waist:	61 cm
Hips:	90 cm
Shoe Size:	40
Hair Colour:	brown
Eye Colour:	blue



New Model -70 Vouliagmenis Ave – Argyroupoli, Athens 16452

T : +302109966234, E : models@newmodel.gr , S : newmodel.gr, FB : NewModel Agency, I : new\_model\_agency





MARCH 2015 CHICAGO



A heavy influence from  
stands out with a sweet  
Rosalba, Guaymas, Vall  
de Arona, \$2,495. Rose  
Patrona, Patrona 18-karat  
gold pendant, \$2,600.  
Tiffany & Co. Lightroom-karat  
rose gold and white-quartz  
ring, \$2,850. Pandora 41  
L'Orléans, Grande, sapphire  
and moonstone earrings,  
\$284. paroligems.com



You can't be gone  
in the bold cut  
and patterned  
characteristic T  
style. Left: Cat  
sweater \$1,000. \$6  
Dexter Lashes  
suede heels, \$10  
w/strass/strass.com  
Bambino 8-6  
sartan sunglasses,  
\$250. Spauld  
Right: Cut  
sweater, \$425. 1  
hat, \$290. 1  
glazed hat \$100. A Detox  
accessories.com. 7  
Kurti sunglasses  
heel (see p  
10). 8/10/10/10  
shoes, \$190. \$6  
Theory Lory.com  
sunglasses, \$4  
Spauld



Rainy spring days are  
no match for these  
eye-popping items. At left:  
Lemon printed knit and  
cotton-cady dress, \$1,700.  
Newman-Norris. Callahan  
heels, \$200. Christian  
Louboutin. Left: monochrom  
new print and light-wash blue, A  
\$1,400. Alexander. At  
right: A.C. New sweater, \$175.  
and ring set, \$790. accessories. Cable  
Choker via fabric leather  
sweater, \$125. from  
Mallory of jewel neckties,  
\$300 and turquoise ring  
with diamonds, \$1,000.  
At Adams.

LOCATION: COURTESY OF DAVID CARTER  
FURNITURE: PEGASUS DESIGN  
PHOTOGRAPHY: ANDREW MCCOY  
STYLING: ANDREW BLACK  
MODELS: LINDSEY LARSEN AND DOMI  
HAUG. HAUG STYLING WITH PEARL & BEES  
HAIR: LISA THORPE. MAKEUP: ANDY  
LINDSEY HAIR  
HAIR: PIERRE MICHELLE HAIR  
ARTIST: JAMES HARRIS  
HAIR: ANDREW HAIR. ALMA THORPE

by

La Belle

# Rêve

MAKE YOUR BRIDAL DREAMS  
COME TRUE IN GRAND,  
GLAMOROUS GOWNS

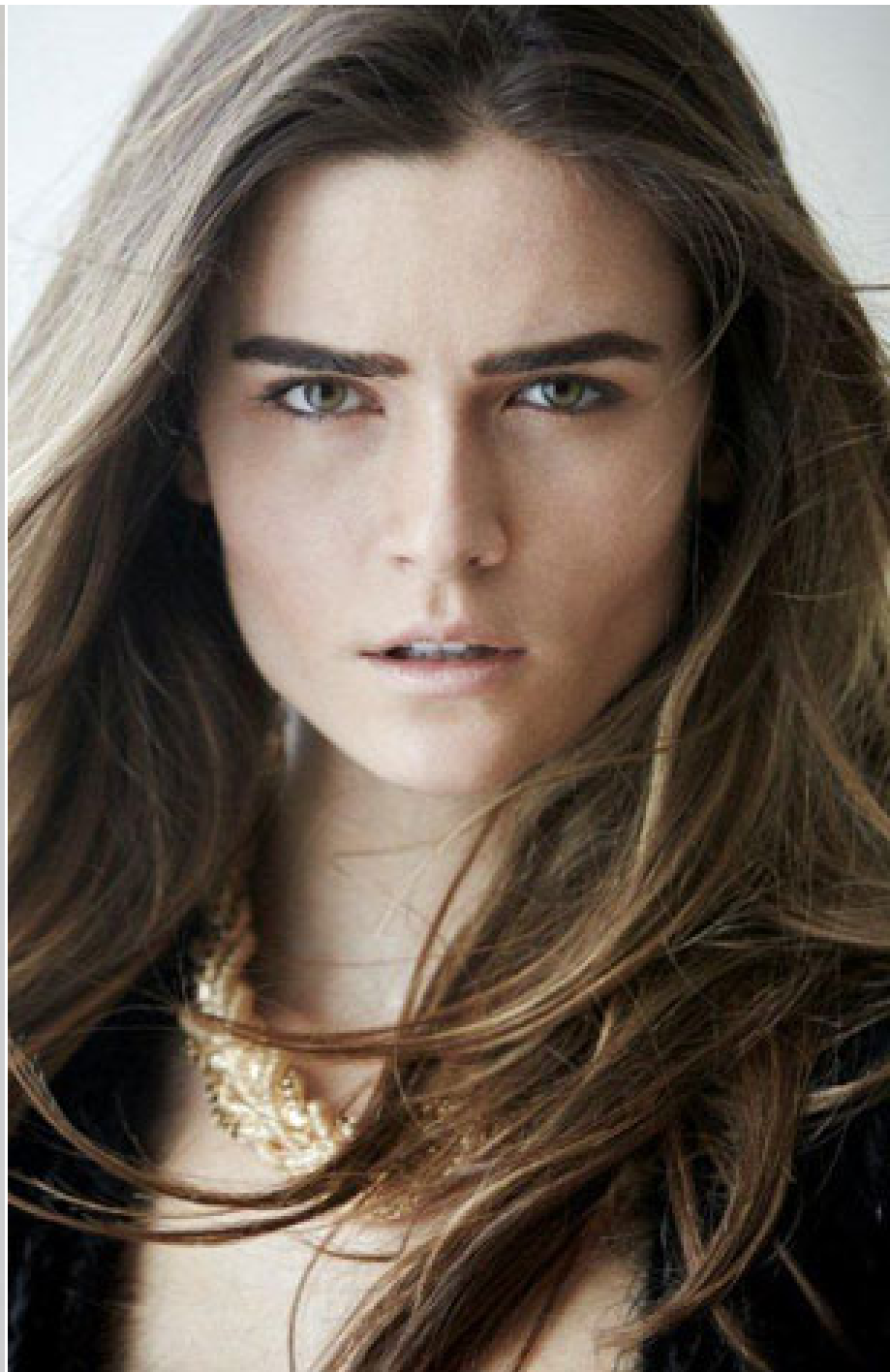
PHOTOGRAPHY BY *Cybillic Costello* STYLING BY *Rebecca Neig*  
HAIR BY *Liza Anselmi* MAKEUP BY *Barbara Dyer*  
FLOWERS BY *Scarlett Dwyer* LOCATION *The Colony Club*

TRUSTRIDE.COM



Tracy Lee Photography  
at Grand  
and  
Tracy Lee Photography  
Barbara Dyer  
2012-2013  
www.  
www.  
www.  
www.  
www.

www.





THIS PAGE: Catherine  
Deane "Waterfall" dress,  
\$600, at [pinks.com](http://pinks.com); Sara  
Gabriel "Manolo" veil,  
\$870, at The Green Shop  
Ann Arbor, 734-534-4696;  
[appreciateapparel.com](http://appreciateapparel.com);  
Maria Terna headpiece,  
\$1,838, at Home Spots  
Birmingham, 248-722-  
4300; [romespots.com](http://romespots.com);  
Giovanna Rossi shoes, \$770,  
and Alexander McQueen  
clutch, \$2,490, at Neiman  
Marcus, Somerset Collection  
South, Dry, 248-641-  
2300; [relious.com](http://relious.com);  
and OPPOSITE: Isabel  
Armstrong gown, \$6,900,  
at Maria's Bridal Couture  
West Bloomfield, 248-528-  
3000; [mariafrida.com](http://mariafrida.com);  
and Maria Terna headpiece,  
\$900, at Home Spots  
Birmingham, 248-722-  
4300; [romespots.com](http://romespots.com)



New Model -70 Vouliagmenis Ave – Argyroupoli, Athens 16452

T : +302109966234, E : models@newmodel.gr , S : newmodel.gr, FB : NewModel Agency, I : new\_model\_agency