

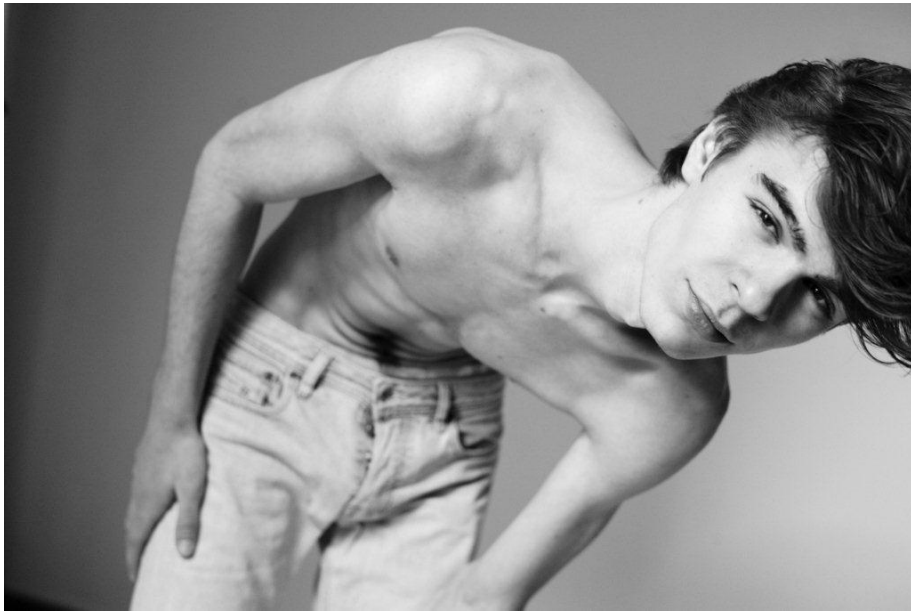
# NEWMODEL

## ALIN

Height:	197 cm
Bust:	
Waist:	
Hips:	
Shoe Size:	45
Hair Colour:	blonde
Eye Colour:	green



New Model -70 Vouliagmenis Ave – Argyroupoli, Athens 16452  
T : +302109966234, E : models@newmodel.gr , S : newmodel.gr, FB : NewModel Agency, I : new\_model\_agency













New Model -70 Vouliagmenis Ave – Argyroupoli, Athens 16452  
T : +302109966234, E : [models@newmodel.gr](mailto:models@newmodel.gr) , S : [newmodel.gr](http://newmodel.gr), FB : NewModel Agency, I : [new\\_model\\_agency](http://new_model_agency)

